

# 7.7.1 Release Notes

## What's New

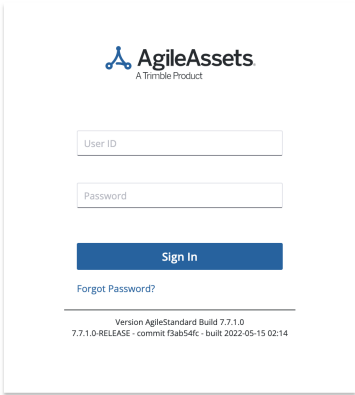
- [New Features and Enhancements](#)
  - [Refreshed User Interface](#)
  - [Work Manager Mobile App](#)
  - [Pavement Express](#)
  - [System](#)
    - [Feature Service Publishing System Job](#)
  - [Platform](#)
- [Other Improvements and Bug Fixes](#)
- [Known Issues, Limitations, and Restrictions](#)
  - [Resolved Known Issues](#)
  - [Existing Known Issues](#)
- [Supported Third Party Applications, Versions, and Specs](#)

## New Features and Enhancements

### Refreshed User Interface

The user interface elements of the login screens and the header and menu system of the application has been refreshed. This change also brings the application up to date with the look and feel of a modern web application, making it easy for users who are accustomed to the menu navigation system for consumer web applications they experience in other aspects of their work or personal lives.

Another aspect of the changes to the user interface is the removal of the client logo on the login screen. The client logo will now only be available and displayed on the header in the application screens.



AgileAssets  
A Trimble Product

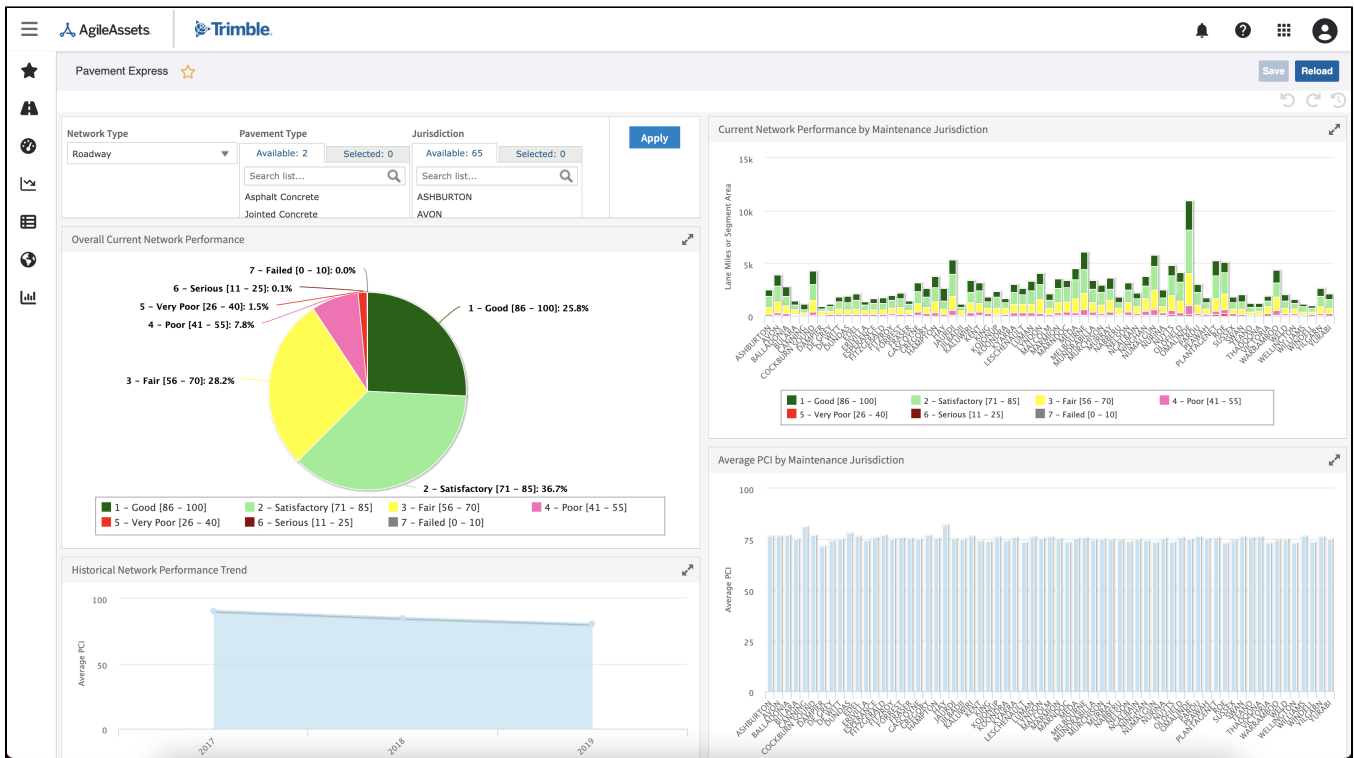
User ID

Password

Sign In

[Forgot Password?](#)

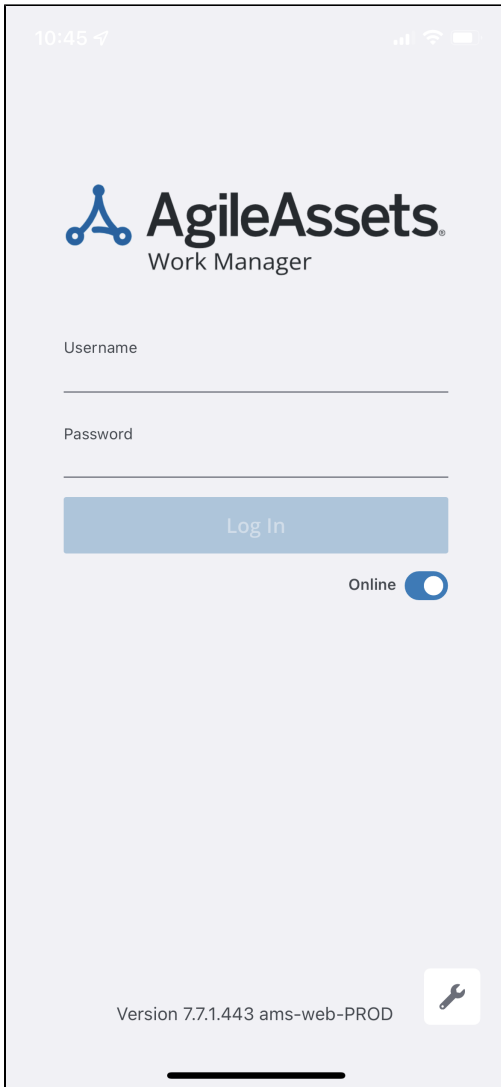
Version AgileStandard Build 7.7.1.0  
7.7.1.0-RELEASE - commit f3ab54fc - built 2022-05-15 02:14



**Note:** Given the change to the menu system and impact to client's internal training or knowledge base materials, clients have the option to opt-in to enable this new user interface.

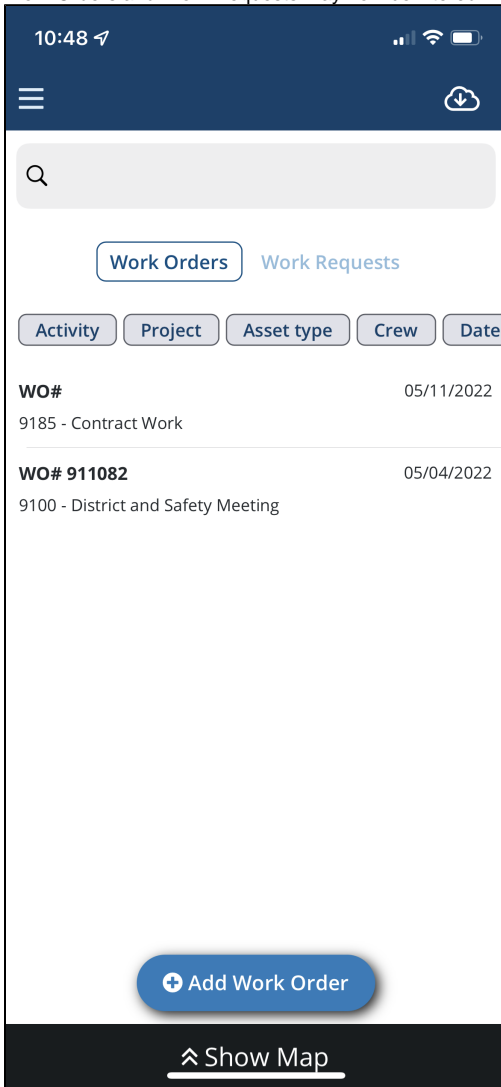
## Work Manager Mobile App

- The login page has been refreshed to include the new AgileAssets logo and new colors throughout the app.



- A user's asset type selections on the Assets screen will now be remembered so the user does not have to select the same asset type every time.
- Users now have the option of viewing assets of different types that are in the vicinity, while creating a new asset. These assets need to be preselected on the Assets pane before users select the **Add Asset** button. This will allow them to view all the neighboring assets of the selected asset type, when creating a new asset of any type.

- Work Orders and Work Requests may now be filtered in the display:



- Work Orders can be filtered by Activity, Project, Asset type, and date and optionally by EStip, Crew, and Job.
  - Work Requests can be filtered by Priority, Asset type, District, Assigned Admin Unit, and Status.
- Filters available on the Reporting Forms page will only display if there are open forms of that type in the list to be filtered. If there is no active open form, that form type will not appear in the filter list.
- When duplicating Work Requests and Work Orders, it is now possible to duplicate attachments on the Work Request or Work Order as well. Attachments copied over will not reference those on the original Work Request or Work Order but will be created as completely new files.
- When duplicating Work Requests, users now have the option to also copy over locations attached to a Work Request.

## Pavement Express

Four new Summary Reports have been added to the **Report** tab of the **Optimization Analysis** window to support Network Types measured by either area or length:

- Area by Treatment
- Area by Budget Category
- Percent Area Treated by Pavement Type
- Length by Budget Category

## System

### Feature Service Publishing System Job

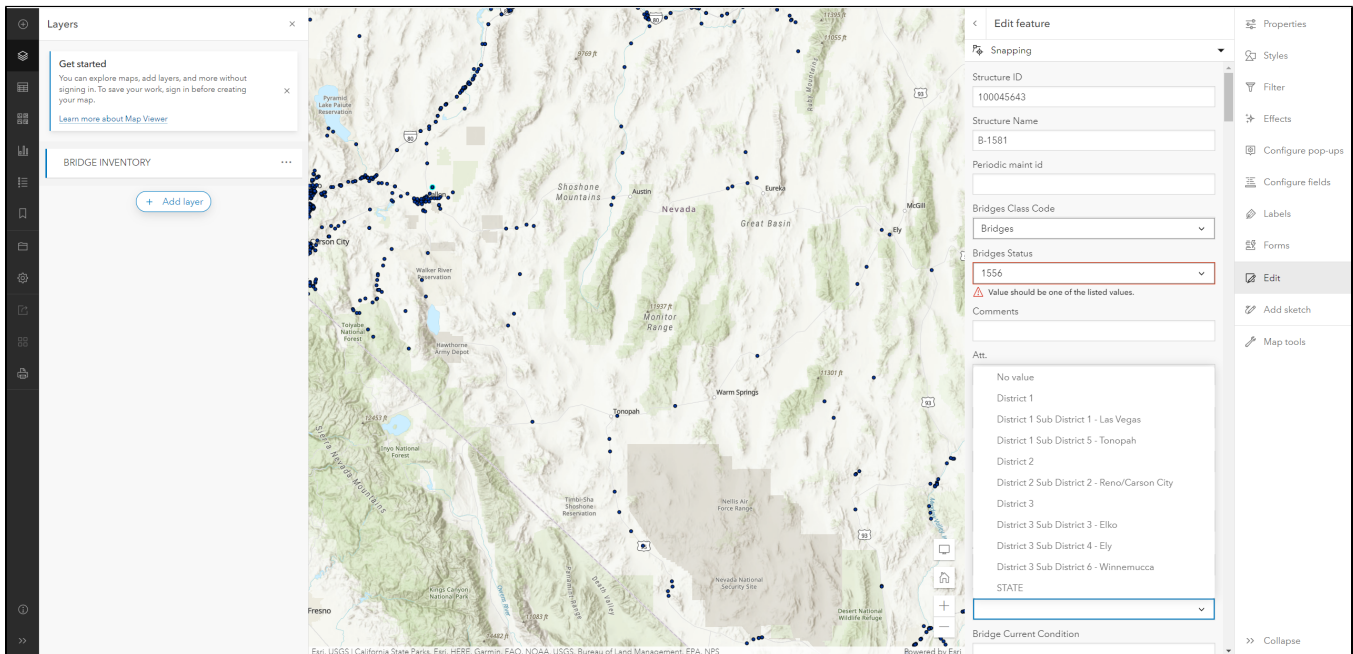
System Jobs now support the publishing of a feature service on either Oracle or Postgres by way of the **GIS Create a Map Feature Service** executable and is compatible with ArcGIS 10.6.1-10.8. The published feature service has the capability to add and edit features, create coded domains and ranged domains, and friendly column labels all derived from SETUP\_COLUMN\_ID information. The system job arguments only require the ID of the publishing service (found in geo\_processing\_jobs), the table name, and a timeout setting.

Schedules	Actions
* System job name	Cron Expression Scheduled? Commit Between Executables Comments Att. User Update Start
0 FillDefSurvSummJobGen	<input type="checkbox"/> <input type="checkbox"/> Fills the DEFECT_SURVEY_SUMMARY table by using JOHN
0 Publish Feature Service	<input type="checkbox"/> <input type="checkbox"/> AUTOTESTWPE
0 FillInvSummAmountJob	<input type="checkbox"/> <input type="checkbox"/> This job summarizes inventory amount data and prepar JOHN
1 Update Alt Refs in Location Table	<input type="checkbox"/> <input type="checkbox"/> This job resets the alt ref columns in SETUP_LOC_DE DEREK
1 Proc Fill Equipment Expense Universe for 1 early yes	<input type="checkbox"/> <input type="checkbox"/> CGARDNER
1. Save Quantity Guidelines	<input type="checkbox"/> <input type="checkbox"/> Saves a copy of Activity Standards (QG), where the use DEREK
2. Proc Fill Equipment Expense Universe for 8 years	<input type="checkbox"/> <input type="checkbox"/> CGARDNER
2. Restore Quantity Guidelines	<input type="checkbox"/> <input type="checkbox"/> Restores a previously saved copy of Activity Standards SYSTEM
Acquire/Release System Lock	<input type="checkbox"/> <input checked="" type="checkbox"/> The system is locked via the Acquire/Release System L SYSTEM
Advance FTE Fiscal Year	<input type="checkbox"/> <input type="checkbox"/> fills a new year's 'Year' is an input to job) worth of recor JOHN
Apply new BMS Tree	<input type="checkbox"/> <input type="checkbox"/> KEIVAN
ArcGis Reconcile	<input type="checkbox"/> <input type="checkbox"/> This job will reconcile data in ArcGis tables
ArcGis Sync for Collector	<input type="checkbox"/> <input type="checkbox"/> This job will synchronize all data used for Collector
ArcGis Sync To Agile	<input type="checkbox"/> <input type="checkbox"/> This job will sync from ArcGis tables to AMS base table

Executables	Actions
* System Job Executable	Order Arguments Comments Att. User Update Date Update
GIS Create a Map Feature Service	1 1.BRIDGE_INVENTORY.00000 AUTOTESTWPE 4/21/2023

The published feature service is ready for adding and editing of features as soon as publishing is completed successfully.



## Platform

- An update that was made to the v2/assets endpoint. A new "allowStale" parameter when set to "true" will read data from a materialized view rather than the asset\_vw view. This will improve the speed of syncing data on Work Manager.
- The system now supports authentication via OpenID using parameters like e-mail address, user id, or any other non-numeric attribute that can be used to identify a user in the AgileAssets system. It is now possible for users to use e-mail address or any other type of ID that is used for authentication on an external system, to login to the AgileAssets system via OpenID.
- Vector basemaps with layers may now be printed at a 300 dpi resolution. The printing of a map with a 34x44 template size takes 3 minutes.

## Other Improvements and Bug Fixes

- Added: In GIS Explorer French characters are now supported.
- Fixed: Issue in Maintenance Manager has been resolved and photos attached to inspection questions in the Asset Inspection windows now remain visible even after an asset inspection has been reloaded.
- Fixed: Issue in Maintenance Manager has been resolved and the GIS map no longer generates an error on the Maintenance Assets window.
- Fixed: Issue in Maintenance Manager has been resolved and the error message when removing an activity from a project with Work Orders have already been issued for that activity has been updated for clarity and to include specific instructions.
- Fixed: Issue in Maintenance Manager has been resolved and the Work Orders Labor Daycards table has been updated so that approved daycards cannot be edited and multiple users in multiple browsers cannot check in conflicting changes.
- Fixed: Issue in Maintenance Manager has been resolved and the Simple Asset Inspection window has been updated so that deleting an Inspection does not affect the LRS location on the asset being inspected.
- Fixed: Issue in multiple modules has been resolved and multi-row selection in windows with scrolling functionality now works correctly.
- Fixed: Issue in multiple products has been resolved and the Quick Links star icon now turns yellow immediately after being clicked and the window is added to the Quick Links list without needing to be reloaded. Removal also no longer requires a window reload.
- Fixed: Issue in multiple products has been resolved and paginated data windows now contain Total Pages and Total Rows information in the footer and that the numbers update to reflect any changes to the records.

- Fixed: Issue in Structures Inspector has been resolved and alternative naming conventions are now supported for Tunnel Name column in the Inspections Manager window.
- Fixed: Issue in Structures Inspector has been resolved and Inspections can now be created immediately for newly created Tunnel assets.
- Fixed: Issue in Structures Inspector has been resolved and the Details pane in the FHWA SNTI File Preview window now populates correctly without generating an error.
- Fixed: Issue in Structures Inspector has been resolved and the RateElementsByDefects feature toggle for the Current Inspections window now works correctly to enable and disable the separate attachments pane and the Insert Like function.
- Fixed: Issue in Structures Inspector has been resolved and inspections with data that exceeds the bounds of non-explicitly set field formats can now be downloaded.
- Fixed: Issue in Structures Inspector has been resolved and elements without all required fields completed in the Elements Ratings tab can not be saved.
- Fixed: Issue in Structures Inspector has been resolved and the Submit Inspection process now verifies that all required fields are filled and fully validates inspection records prior to processing any inspection status changes. Validation checks occur on Submit instead of Save now to prevent any errors. (PTC)
- Fixed: Issue in System module has been resolved and the "Send a link to the window by email" function in the System Job Schedules window now works correctly.
- Fixed: Issue in Work Manager App has been resolved and initial download of Historical Inspections now works correctly.

## Known Issues, Limitations, and Restrictions

### Resolved Known Issues

- Layers can now be exported from bound maps in GIS Explorer.

### Existing Known Issues

- In the Work Manager app, if an inspection has fields where text must be entered as an input, the check box next to the field will clear after the inspection is synced. This only affects text fields.
- In Signals & ITS Manager, when using the new feature to edit point assets on the map on the bound map, and selecting multiple assets with the multi-select tool, the tool sometimes does not select all the assets within the selected area. After selecting assets and moving them on the map, you must click the general map area to complete the action. You also need to click on the **Edit** button on the map to complete the edit process. To select another asset, you will then need to switch from multi-select mod back to the arrow.
- When using the Work Manager app on a device with low memory, switching the app to the background can result in being logged out automatically. If the user needs to authenticate using Open ID to log back in, they will need an internet connection. This means that if they are logged out due to low memory while offline, they may be unable to log back in until they have internet connectivity.
- In the Work Manager app, if a user enters data in a Reporting form or Asset Collection form and then switches the app to the background and a timeout occurs, the data entered will not be saved. This is an expected behavior and will not be changed.
- In the Work Manager mobile app, if an inspection has fields where text must be entered as input, the check icon next to the field will be cleared out after the inspection has been synced. This only affects open text fields.
- After migrating JasperReports Server reports, private reports cannot be viewed in the AgileAssets application since they are migrated to the user's private JasperReports Server folder.  
Workaround: Copy this report from the private user's folder in JasperReports Server repository directly to Migrations folder. Make the report public prior to migration from Manage Reports window, and then make it private again after successful migration if desired.
- For JasperReports ad-hoc views used in dashboards, JasperReports Server 7.8 version provides a new parameter to show Titles by default so they can be duplicated in places where they are used. To address this issue, the duplicated headers can be disabled manually in JasperReports Server when opening the dashboard in Designer mode.
- For JasperReports ad-hoc views used in dashboards that use Crosstab visualization type, an extra Measures field is introduced with JasperReports Server 7.8. To avoid this issue, the visualization type needs to be changed to any other type. This may be configured directly in JasperReports Server when opening the dashboard in Designer mode.
- General font and scale changes were introduced with JasperReports Server 7.8. As a result, some dashboard objects may be than in previous versions and have different formatting (ex: ad-hoc views used in dashboards that use Pie Chart visualization type can display less information or may not show all values). To avoid this, the space used might need to be increased or the font size may need to be decreased. The same might need to be done for Stacked Column visualization type and others. This may be configured directly in JasperReports Server or fixed explicitly for every specific dashboard object.
- Some String Type report parameters after JasperReports Server 7.8 upgrade may display Null. This value can be removed manually while selecting report parameters for viewing so that the report will be generated as before.
- As a result of general font and scale changes introduced with JasperReports Server 7.8, some Table headers in the reports can be wrapped to another line thus hiding part of the text. This issue may also affect some report data - titles, text displayed in table columns/rows etc. This might need to be fixed explicitly for each specific report.
- There is an existing ESRI bug (<https://support.esri.com/en/bugs/nimbus/QIVHLTAwMDEzODczMQ==>) wherein the Export Network tool fails to include all routes in the output when the Linear Referencing System (LRS) Time and Last LRS Time parameters are used.
- In the Structure Inspector mobile app, the Inspection Date field has been removed from the general form. It will be added back with a validation check for past due inspections.
- Version 7.6.1 of the Work Manager app crashes on non-supported iOS version 12.4.8.
- ESRI 10.8.1 has an existing issue ([BUG-000138399](#)) that will affect users of our Roads and Highways module. They can work around the bug until ESRI resolves it by using the Relocate Events tool from the Location Referencing Tools.tbx located in the installation directory C:\Program Files\ArcGIS\LocationReferencing\Server10.8\ArcToolBox\Toolboxes when creating the GP Tool.
- In Work Manager, when adding a new Work Request an error appears if the name is more than 20 characters long. (KYTC)
- In Signals, when selecting multiple assets with the multi-select tool on the bound map, it will sometimes not select all the assets within the selected area. After selecting assets and moving them on the map, users may have to click in the general map area to complete the action. Users will also need to click on the new **Edit** button on the map to complete the edit process. To select another single asset afterwards, users need to switch from the multi-select mode back to the **Arrow** tool. (NYSDOT)
- On mobile apps running on Windows, when using the device's camera to scan a barcode, the app will crash if the app has not previously been given access to the camera and the device is rotated.
- In Firefox, User Update and Date Update aren't displaying for added elements in Tunnels.

- Work Manager validation checks for Work Logs aren't currently working.
- Users cannot view all warranties attached to a Repair Order if one of them has an empty Name or Warranty Rule field in the Fleet Maintenance Manager App.
- In the Work Manager app, two location cards created for the same asset and the same date currently share Work Logs. Work logs created, edited, or deleted on one will be reflected on the other card. The Web Application does not allow duplicate Location cards for the same Date and Asset, so if a duplicate is created on Work Manager by mistake, it can be easily deleted on the Web application or on Work Manager.
- Repair Orders are currently taking longer than usual to load in the Fleet Maintenance Manager app.
- In the Fleet Maintenance Manager app, the Date selector is cropped in landscape mode on small devices.
- Delete is not available in in the Fleet Maintenance Manager app.
- Direct Cost Quantities are rounded or truncated if too large to display in the Fleet Maintenance Manager app.
- Direct Cost Activity cannot be updated to None if it has previously been set with a different value in the Fleet Maintenance Manager app.
- Changing Warranty Rules does not currently reset unsaved values on Repair Orders in the Fleet Maintenance Manager app.
- The Repair Order Number is currently missing from the header of drop-down lists in the Repair Order screen in the Fleet Maintenance Manager app.
- Time Spent does not currently support 2 decimal places in the Fleet Maintenance Manager app.
- The Type of Service drop-down in the Fleet app and Equipment Work Class drop-down on the web are not currently synced.
- Lists are not using the full screen space in Admin Units and Daycards in the Fleet Maintenance Manager app - the lists can still be scrolled in their entirety so no functionality is lost.
- The Mileage field is not following digit parameters for Repair Orders in the Fleet Maintenance Manager app.
- Labor and Equipment daycard statuses are not syncing correctly between the web and the Fleet Maintenance Manager app.
- Direct Costs are not updating correctly when Description or Part Number exceed 100 in the Fleet Maintenance Manager app.
- In Work Manager, when users update from version 7.5.2 to 7.5.3, they should perform a sync when they first login.
- In Fleet & Equipment Manager, it is currently possible to delete all the equipment from an equipment purchase and then have that purchase approved.
- The Work Manager mobile app can crash if the device screen is rotated during sync.
- In the Structure Inspector mobile app, in certain network connectivity conditions where a sync of an inspection with attachments from the structure inspector mobile app fails, a subsequent successful sync of the app may cause element condition state notes to be duplicated.
- In the Work Manager mobile app, some thumbnails for uploaded photographs added to an inspection rotate 90°.
- In the Work Manager mobile app, assets cannot be setup to view in the app as View Only. They need have the necessary geometry information and assets set to allow editing and inspection creation.
- In the Work Manager mobile app, only one currency symbol (\$) is currently supported.
- In Work Manager and Maintenance Manager, photographs added to an Inspection do not display in the app on some Android devices. This issue is device specific.
- In Maintenance Manager, it is currently possible to create an inspection without entering an Inspection Date. If no date is selected, when syncing the inspection to Work Manager, it will default to 01/01/01 on Work Manager.
- In Structure Inspector, when the Tunnel inventory screen is displayed, **Revert Edits** is briefly shown and then hidden along with **Edit Tunnel**.
- Structure Inspector inspections for Tunnels can currently be edited after being submitted.
- Work Manager App users on Android devices with memory of less than 2GB may receive an Out of Memory Exception. Please close and reopen the app daily to avoid this issue.
- The Structure Inspector mobile app Condition State comment text box covers the title.
- The supplied CORS filter for Tomcat will not work on Tomcat version 8.5.32 and above. Customers need to review the use of the CORS filter and update web.xml as needed. Additional information can be found at <https://tomcat.apache.org/tomcat-8.5-doc/config/filter.html>
- As of Chrome 71, browser pop-ups may be blocked which will negatively affect system operations. To address this in Chrome go to Settings > Advanced > Content Settings > Pop ups and redirects and then add the URL for the application.
- The new GIS Explorer like all web mapping applications requires datasets in the geographic coordinate system (EPSG:4326), so customer schemas with data stored in a different coordinate system would need to be transformed for map layers to be created from the dataset. See the section on re-projecting geometries in the [Implementation Guide](#)
- Inserting a location or inventory item from a map is not functional when using Firefox as your web browser. To work around this limitation, use the other supported web browsers: Chrome or Safari
- When you select to print a map as an image (png file) using Firefox as your web browser, the file is downloaded as map.png.pdf. You would have to manually edit out the '.pdf' extension from the file name, after the file has been downloaded, to be able to open/use the file
- When you define a map print template of size 34x44 or larger, an error is returned since the size of the generated map image always times before a PDF for printing is generated
- While working on the GIS Interface and performing tasks that does not generate a request to the server (such as styling a map), your user session may expire as a result. The configured session expiration warnings will be displayed when this occurs or your session may timeout and a session expiration notification displayed, if a warning is not configured
- Map filter value does not get pre-populated in the JasperReport print template, even though the parameter is specified for display in the template
- Map filter value cannot be defined or edited for a map with a specified area of interest. To work around the definition limitation, the map filter should be defined before the AOI is set
- A map's layer style settings become null and un-editable, when an applied filter is partially applicable or not applicable to the defined styling attribute values for the map
- On a map bound to a data window, some items when selected on the map aren't highlighted in the data window because they aren't present there (In a data window, items can be Access Regulated), but on the map all inventory items are displayed
- In the Roads & Highways interface, routes with curves are not handled properly by the ESRI FDGB API. A workaround is to have the agency densify the routes to turn the curves into line strings
- The HTML5 based copy/paste functionality has limitations on the number of rows that can be copied to a browser's clipboard
  - Edge - 4000 rows
  - Chrome - 400 rows
  - Firefox - 1000 rows
  - Edge on a Surface Tablet - 15 rows
- When you select to copy rows from a data window, data from hidden columns on the window are also copied to the clipboard
- The spinner indicating that a layer is loading in the GIS Explorer, continues to spin after selecting to remove a previous loading layer by using either the new map or remove layer option
- When zoomed in at the 0.6km/0.4m level before selecting to print a map, the basemap is not rendered on the resulting printed map
- Hebrew and other languages with special characters are not rendered properly on the properties panel of GIS Explorer
- GIS Explorer does not display the contents of the screen for a right to left language setting
- The owner of a GIS catalog folder no longer has access to the catalog, when the folder is shared by a GIS admin with administrative units that the owner of the folder does not belong to
- A map built from an image service is not rendered in the printed document (PDF or PNG) when select to print the map



- An image layer is not displayed on the map when change the basemap from the 'None' option to any other basemap option
- A map comprised of layers from multiple sources including an image service, does not display the layers in the correct z-order when the layers are re-ordered
- For some monitor resolutions, opening the messages dialog while the GIS Explorer window is open results in the messages dialog to be partially hidden
- When the same editable layer is added to GIS Explorer so there is more than one active, the features on the layer cannot be dragged for an edit
- The undo/redo of edits retains the actions performed even the associated layer has been removed
- When add a new editable layer to a map with in-progress edits, the undo and redo options are temporarily disabled. Performing an edit re-enables undo/redo and previous edits can be undone or redone
- In Microsoft Edge, some admin units in the Admin Units drop-down on the inspection team's creation dialog, appear as actionable links
- Setting of columns as fixed in a data window is not supported in right to left language displays, such as for Hebrew or Arabic, i.e. only the left most columns can be fixed
- There is an issue in ESRI ArcGIS Enterprise 10.6.1, that prevents the publishing of services for Oracle tables or views with a geometry column owner of MDSYS. When the ESRI issue is addressed, we will test and ensure that the functionality has been restored

## Supported Third Party Applications, Versions, and Specs

	Platform	Version	Notes
<b>Application Server</b>	Apache Tomcat	8.5, 9	
<b>Java</b>	Oracle Java SE	11	
	*Zulu JDK Oracle JDK	1.11	*Zulu JDK is the preferred JDK.  Support for Open JDK ended with 7.6.4.
<b>Web Browsers</b>	Internet Explorer	11	<b>Note:</b> Microsoft has stopped supporting Internet Explorer as of August 17th, 2021 and Agile Assets will stop supporting it on June 15th, 2022 for all versions of the application.
	Edge	81	
	Chrome	910.4472	
	Firefox	91 ESR	Extended Support Release versions are supported.
	Mobile Safari	iOS 14.X iOS 15.X	
<b>Database Servers</b>	Oracle Enterprise Edition	19c	Requires OJDBC8 driver  We recommend upgrading to 19c because 12.2 is no longer supported as of Q1 2022 and 18c is no longer be supported as of Q2 2022.
	PostgreSQL	<del>9.5</del> <del>9.6</del> 12	9.5 and 9.6 have been deprecated as of 7.6.5.
<b>Server Operating Systems</b>	MS Windows Server	2012 R2 64-bit or newer	Support for 2008 ended with 7.6.4.
	Red Hat Enterprise Linux	7	Support for 5 and 6 ended with 7.6.4.
<b>Reporting</b>	Jaspersoft	7.8	JasperReports 4.X was deprecated after 7.6.1 and JasperReports Server 6.x was supported through 7.6.2.  Beginning with 7.6.3, only JasperReports Server 7.8 is supported.
<b>Mobile Apps</b>	iOS	14.X 15.X	
	Android	9.X, 10.X 11.X	The Materials Manager mobile app is not supported on Android.
	Windows	10 Universal Windows Platform	The Materials Manager mobile app is not supported on Windows 10.  1909 - 19H2 - November 2019 Update - build 18363 or higher is recommended
	ESRI ArcGIS	10.6	



<b>LRS Interface</b>	Enterprise		
	ESRI Roads & Highways	10.7, 10.8, 10.8.1	<p>ESRI 10.8.1 has an existing issue (<a href="#">BUG-000138399</a>) that will affect users of our Roads and Highways module. They can work around the bug until ESRI resolves it by using the Relocate Events tool from the Location Referencing Tools.tbx located in the installation directory C:\Program Files\ArcGIS\LocationReferencing\Server10.8\ArcToolBox\Toolboxes when creating the GP Tool.</p> <p>ESRI has a known issue (<a href="https://support.esri.com/en/bugs/nimbus/QIVHLTAwMDEzODczMQ==">https://support.esri.com/en/bugs/nimbus/QIVHLTAwMDEzODczMQ==</a>) wherein the Export Network tool fails to include all routes in the output when the Linear Referencing System (LRS) Time and Last LRS Time parameters are used.</p>
<b>Application Deployment</b>	Docker	18, 19, 20	
<b>Recommended Minimum Device Specs</b>	Tablets	Fleet  Structure Inspector  Work Manager	iOS, Android, or Windows  Screen Size: 7 inch  Camera resolution: 8MP  Internal memory: 4GB  Device storage: at least 64GB, with a minimum of 4GB available
	Smart Phones	Fleet  Work Manager	iOS or Android  Screen Size: 5.8  Camera resolution: 8MP  Internal memory: 3GB  Device storage: at least 64GB, with a minimum of 4GB available
	Desktop	Web applications	All operating systems  System RAM: 4GB  Processor Speed: Single Core 2 Ghz  Processor Type: 64 bit  Screen Resolution: 1024 X 768